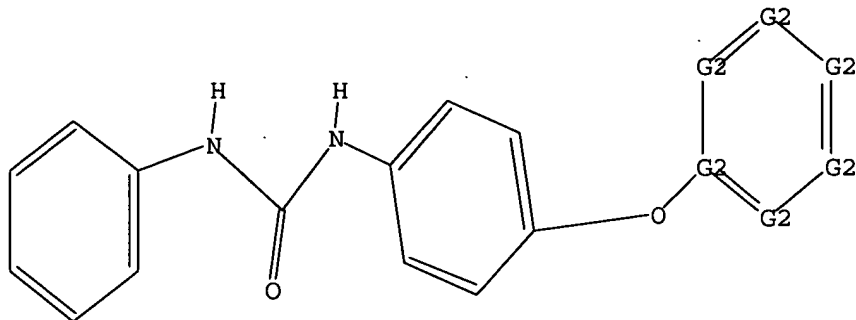


6/20/05

L17 STRUCTURE UPLOADED

=> d 117
L17 HAS NO ANSWERS
L17 STR



G1 O,S
G2 C,N

Structure attributes must be viewed using STN Express query preparation.

=> s 117
SAMPLE SEARCH INITIATED 11:56:01 FILE 'REGISTRY'
SAMPLE SCREEN SEARCH COMPLETED - 984 TO ITERATE

100.0% PROCESSED 984 ITERATIONS 47 ANSWERS
SEARCH TIME: 00.00.01

FULL FILE PROJECTIONS: ONLINE **COMPLETE**
BATCH **COMPLETE**
PROJECTED ITERATIONS: 17799 TO 21561
PROJECTED ANSWERS: 529 TO 1351

L18 47 SEA SSS SAM L17

=> s 117 ful
FULL SEARCH INITIATED 11:56:09 FILE 'REGISTRY'
FULL SCREEN SEARCH COMPLETED - 19722 TO ITERATE

100.0% PROCESSED 19722 ITERATIONS 959 ANSWERS
SEARCH TIME: 00.00.01

L19 959 SEA SSS FUL L17

=> file caplus		
COST IN U.S. DOLLARS	SINCE FILE	TOTAL
	ENTRY	SESSION
FULL ESTIMATED COST	161.33	545.03
DISCOUNT AMOUNTS (FOR QUALIFYING ACCOUNTS)	SINCE FILE	TOTAL
	ENTRY	SESSION
CA SUBSCRIBER PRICE	0.00	-4.38

09889227

6/20/05

FILE 'CAPLUS' ENTERED AT 11:56:13 ON 20 JUN 2005
USE IS SUBJECT TO THE TERMS OF YOUR STN CUSTOMER AGREEMENT.
PLEASE SEE "HELP USAGETERMS" FOR DETAILS.
COPYRIGHT (C) 2005 AMERICAN CHEMICAL SOCIETY (ACS)

Copyright of the articles to which records in this database refer is held by the publishers listed in the PUBLISHER (PB) field (available for records published or updated in Chemical Abstracts after December 26, 1996), unless otherwise indicated in the original publications. The CA Lexicon is the copyrighted intellectual property of the American Chemical Society and is provided to assist you in searching databases on STN. Any dissemination, distribution, copying, or storing of this information, without the prior written consent of CAS, is strictly prohibited.

FILE COVERS 1907 - 20 Jun 2005 VOL 142 ISS 26
FILE LAST UPDATED: 19 Jun 2005 (20050619/ED)

New CAS Information Use Policies, enter HELP USAGETERMS for details.

This file contains CAS Registry Numbers for easy and accurate substance identification.

=> s 119

L20 228 L19

=> s 120 and py<1998

18128098 PY<1998

L21 100 L20 AND PY<1998

=> d abs bib hitstr 1-100

L21 ANSWER 1 OF 100 CAPLUS COPYRIGHT 2005 ACS on STN

AB ANHDNHB [A = (substituted) alkyl, alkenyl, alkynyl; B = (unsatd.) (substituted) mono- or bicyclic ring containing ≤4 heteroatoms; D = CO, CS, SO₂], were prepared Thus, 4-(5-oxazolyl)aniline and PhCH₂NCO were stirred overnight in CH₂Cl₂ to give N-benzyl-N'-[4-(5-oxazolyl)phenyl]urea. Several title compds. inhibited IMPDH with Ki = 0.01-50 nM.

AN 2002:103521 CAPLUS

DN 136:151157

TI Preparation of arylureas and related compounds as inhibitors of inosine 5'-monophosphate dehydrogenase.

IN Armistead, David M.; Badia, Michael C.; Bemis, Guy W.; Bethiel, Randy S.; Frank, Catharine A.; Novak, Perry M.; Ronkin, Steven M.; Saunders, Jeffrey O.

PA Vertex Pharmaceuticals, Incorporated, USA

SO U.S., 22 pp., Cont.-in-part of U.S. 5,807,876.

CODEN: USXXAM

DT Patent

LA English

FAN.CNT 3

	PATENT NO.	KIND	DATE	APPLICATION NO.	DATE
PI	US 6344465	B1	20020205	US 1997-801780	19970214
	US 5807876	A	19980915	US 1996-636361	19960423

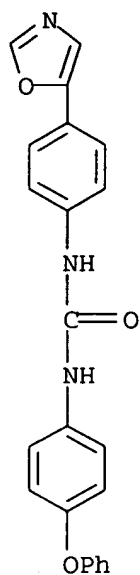
09889227

6/20/05

US 6054472 A 20000425 US 1997-832165 19970402
CA 2252465 AA 19971030 CA 1997-2252465 19970421 <--
WO 9740028 A1 19971030 WO 1997-US6623 19970421 <--
W: AL, AM, AT, AU, AZ, BA, BB, BG, BR, BY, CA, CH, CN, CU, CZ, DE,
DK, EE, ES, FI, GB, GE, GH, HU, IL, IS, JP, KE, KG, KP, KR, KZ,
LC, LK, LR, LS, LT, LU, LV, MD, MG, MK, MN, MW, MX, NO, NZ, PL,
PT, RO, RU, SD, SE, SG, SI, SK, TJ, TM, TR, TT, UA, UG, UZ, VN,
YU, AM, AZ, BY, KG, KZ, MD, RU, TJ, TM
RW: GH, KE, LS, MW, SD, SZ, UG, AT, BE, CH, DE, DK, ES, FI, FR, GB,
GR, IE, IT, LU, MC, NL, PT, SE, BF, BJ, CF, CG, CI, CM, GA, GN,
ML, MR, NE, SN, TD, TG
AU 9726785 A1 19971112 AU 1997-26785 19970421 <--
AU 723730 B2 20000907
ZA 9703397 A 19971114 ZA 1997-3397 19970421 <--
EP 902782 A1 19990324 EP 1997-918759 19970421
R: AT, BE, CH, DE, DK, ES, FR, GB, GR, IT, LI, LU, NL, SE, MC, PT,
IE, SI, LT, LV, FI, RO
CN 1219929 A 19990616 CN 1997-194856 19970421
CN 1116288 B 20030730
BR 9708735 A 19990803 BR 1997-8735 19970421
NZ 332405 A 20000623 NZ 1997-332405 19970421
TR 9802136 T2 20010621 TR 1998-9802136 19970421
JP 2001509132 T2 20010710 JP 1997-538234 19970421
AP 813 A 20000228 AP 1997-973 19970423
W: BW, GM, GH, KE, LS, MW, SD, SZ, UG, ZM, ZW
TW 574216 B 20040201 TW 1997-86105288 19970423
NO 9804917 A 19981223 NO 1998-4917 19981022
NO 312963 B1 20020722
KR 2000010580 A 20000215 KR 1998-708454 19981022
MX 9808804 A 20000531 MX 1998-8804 19981023
US 6541496 B1 20030401 US 2000-556253 20000424
US 2003195202 A1 20031016 US 2003-351731 20030124
PRAI US 1996-636361 A2 19960423
US 1997-801780 A2 19970214
US 1997-832165 A 19970402
WO 1997-US6623 W 19970421
US 2000-556253 A3 20000424
OS MARPAT 136:151157
IT 198820-04-1
RL: PAC (Pharmacological activity); THU (Therapeutic use); BIOL
(Biological study); USES (Uses)
(preparation of arylureas and related compds. as inhibitors of IMP
dehydrogenase)
RN 198820-04-1 CAPLUS
CN Urea, N-[4-(5-oxazolyl)phenyl]-N'-(4-phenoxyphenyl)- (9CI) (CA INDEX
NAME)

09889227

6/20/05



RE.CNT 21 THERE ARE 21 CITED REFERENCES AVAILABLE FOR THIS RECORD
ALL CITATIONS AVAILABLE IN THE RE FORMAT

L21 ANSWER 2 OF 100 CAPLUS COPYRIGHT 2005 ACS on STN

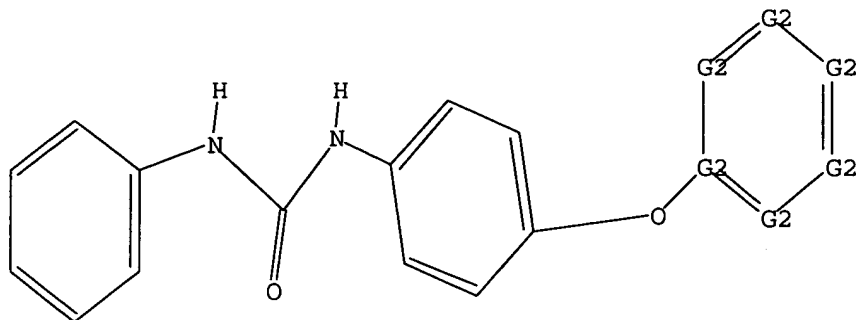
AB The invention relates to a novel class of compds. which are IMPDH
inhibitors. This invention also relates to pharmaceutical compns.
comprising these compds.

09889227

6/20/05

L22 STRUCTURE UPLOADED

=> d 122
L22 HAS NO ANSWERS
L22 STR



G1 O,S
G2 C,N

Structure attributes must be viewed using STN Express query preparation.

=> s 122
SAMPLE SEARCH INITIATED 12:14:03 FILE 'REGISTRY'
SAMPLE SCREEN SEARCH COMPLETED - 984 TO ITERATE

100.0% PROCESSED 984 ITERATIONS 47 ANSWERS
SEARCH TIME: 00.00.01

FULL FILE PROJECTIONS: ONLINE **COMPLETE**
BATCH **COMPLETE**
PROJECTED ITERATIONS: 17799 TO 21561
PROJECTED ANSWERS: 529 TO 1351

L23 47 SEA SSS SAM L22

=> s 122 ful
FULL SEARCH INITIATED 12:14:10 FILE 'REGISTRY'
FULL SCREEN SEARCH COMPLETED - 19722 TO ITERATE

100.0% PROCESSED 19722 ITERATIONS 959 ANSWERS
SEARCH TIME: 00.00.02

L24 959 SEA SSS FUL L22

=> file caplus
COST IN U.S. DOLLARS SINCE FILE TOTAL
ENTRY SESSION
FULL ESTIMATED COST 161.33 1215.30

DISCOUNT AMOUNTS (FOR QUALIFYING ACCOUNTS) SINCE FILE TOTAL

09889227

6/20/05

	ENTRY	SESSION
CA SUBSCRIBER PRICE	0.00	-77.38

FILE 'CAPLUS' ENTERED AT 12:14:17 ON 20 JUN 2005
USE IS SUBJECT TO THE TERMS OF YOUR STN CUSTOMER AGREEMENT.
PLEASE SEE "HELP USAGETERMS" FOR DETAILS.
COPYRIGHT (C) 2005 AMERICAN CHEMICAL SOCIETY (ACS)

Copyright of the articles to which records in this database refer is held by the publishers listed in the PUBLISHER (PB) field (available for records published or updated in Chemical Abstracts after December 26, 1996), unless otherwise indicated in the original publications. The CA Lexicon is the copyrighted intellectual property of the American Chemical Society and is provided to assist you in searching databases on STN. Any dissemination, distribution, copying, or storing of this information, without the prior written consent of CAS, is strictly prohibited.

FILE COVERS 1907 - 20 Jun 2005 VOL 142 ISS 26
FILE LAST UPDATED: 19 Jun 2005 (20050619/ED)

New CAS Information Use Policies, enter HELP USAGETERMS for details.

This file contains CAS Registry Numbers for easy and accurate substance identification.

=> s l24

L25 228 L24

=> s l25 and py<1998

18128098 PY<1998

L26 100 L25 AND PY<1998

=> d his

(FILE 'HOME' ENTERED AT 11:33:58 ON 20 JUN 2005)

FILE 'REGISTRY' ENTERED AT 11:34:18 ON 20 JUN 2005

L1 STRUCTURE UPLOADED

L2 50 S L1

L3 10272 S L1 FUL

L4 0 S L3 AND PY<1998

FILE 'CAPLUS' ENTERED AT 11:39:26 ON 20 JUN 2005

L5 0 S L3AND PY<1998

FILE 'CAPLUS' ENTERED AT 11:39:43 ON 20 JUN 2005

L6 2779 S L3

L7 1904 S L6 AND PY<1998

L8 0 S L7 AND REIDL/IN

L9 0 S L7 AND REIDL

FILE 'CAPLUS' ENTERED AT 11:40:57 ON 20 JUN 2005

L10 0 S L7 AND RIEDL

FILE 'REGISTRY' ENTERED AT 11:45:13 ON 20 JUN 2005

L11 STRUCTURE UPLOADED

09889227

6/20/05

L12 20 S L11
L13 1344 S L11 FUL

FILE 'CAPLUS' ENTERED AT 11:45:57 ON 20 JUN 2005

L14 380 S L13
L15 0 S L14AND PY<1998
L16 295 S L14 AND PY<1998

FILE 'REGISTRY' ENTERED AT 11:55:42 ON 20 JUN 2005

L17 STRUCTURE UPLOADED
L18 47 S L17
L19 959 S L17 FUL

FILE 'CAPLUS' ENTERED AT 11:56:13 ON 20 JUN 2005

L20 228 S L19
L21 100 S L20 AND PY<1998

FILE 'REGISTRY' ENTERED AT 12:13:28 ON 20 JUN 2005

L22 STRUCTURE UPLOADED
L23 47 S L22
L24 959 S L22 FUL

FILE 'CAPLUS' ENTERED AT 12:14:17 ON 20 JUN 2005

L25 228 S L24
L26 100 S L25 AND PY<1998

=> s 126 not 121

L27 0 L26 NOT L21